



EQUIScan Consultation & Measurement

Joanna Lloyd-Aylett is a certified saddle fitter with EQUIScan GmbH

- ❖ Are you having problems with your horses performance?
- ❖ Are you concerned that you, or your horse are not straight?
- ❖ Are you riding a young horse who's shape may have changed due to work?
- ❖ Are you concerned about the fit of your horses saddle?
- ❖ Horse can change shape dramatically within a few months due to exercise, age and condition. It is worthwhile getting your saddle checked from time to time.
- ❖ With the EquiScan Topographer Pro measurements are taken of the horses back recorded and are used to check the fit of the horses saddle.
- ❖ Measurements can also be reproduced and recreated to help monitor changes in the horses back and fit of the saddle.

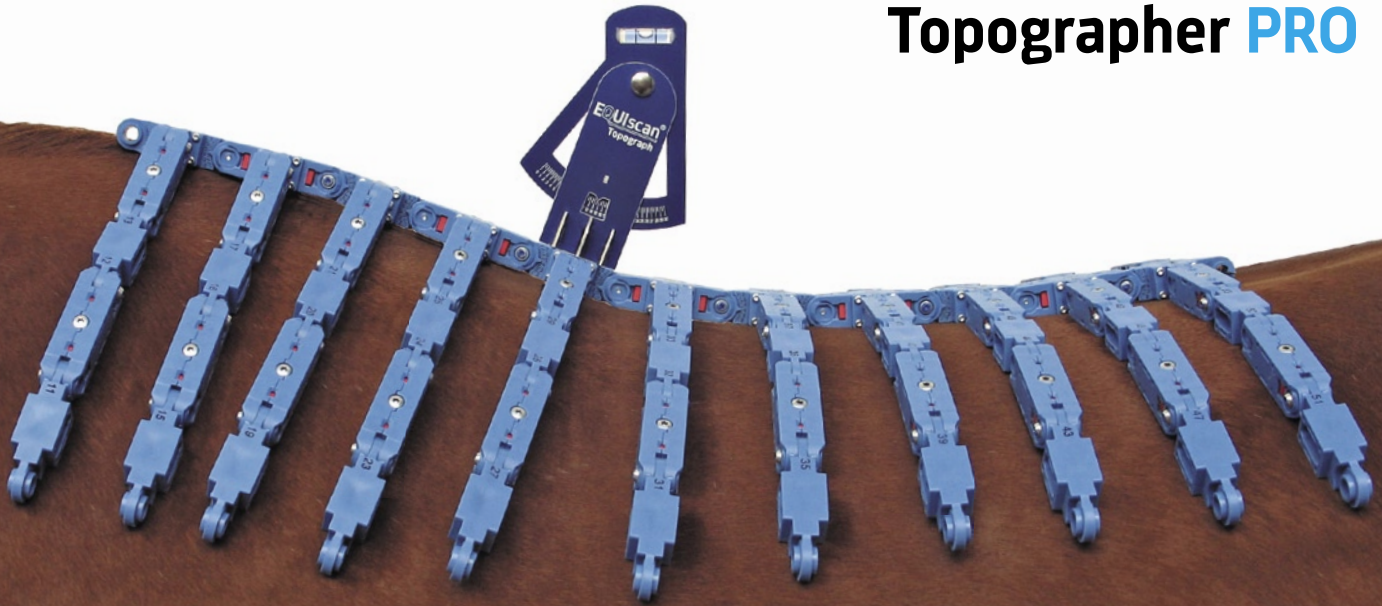
Call Joanna on [07917 562842](tel:07917562842) or [07760305385](tel:07760305385) for an appointment.



EQUIScan[®]
Topographer PRO

EQUIScan[®]

Topographer PRO



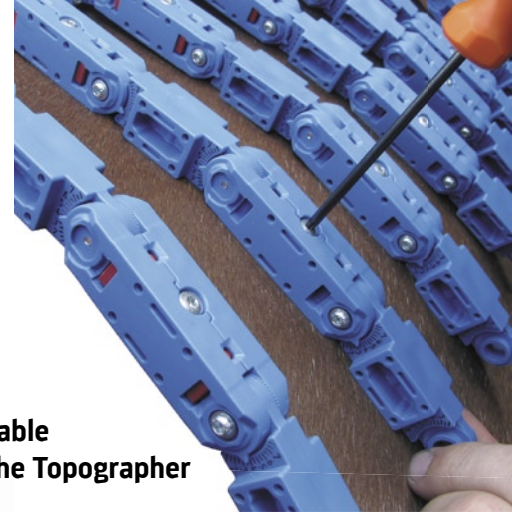
Measuring the horse's back
as the basis for a well-fitting saddle

Joint with scale



Overall, 98 angles of the horse's back are being measured as precise numerical values. This allows world-wide communication of the shape of the horse's back with the help of the EQUIScan-online-platform leveraging business opportunities between partners and countries.

Pivoted, broad-scaled spirit level to record the position in space for an exact comparison of repeated measurements



Comfortably lockable joints to stiffen the Topograph

Advantages of the measurement procedure:

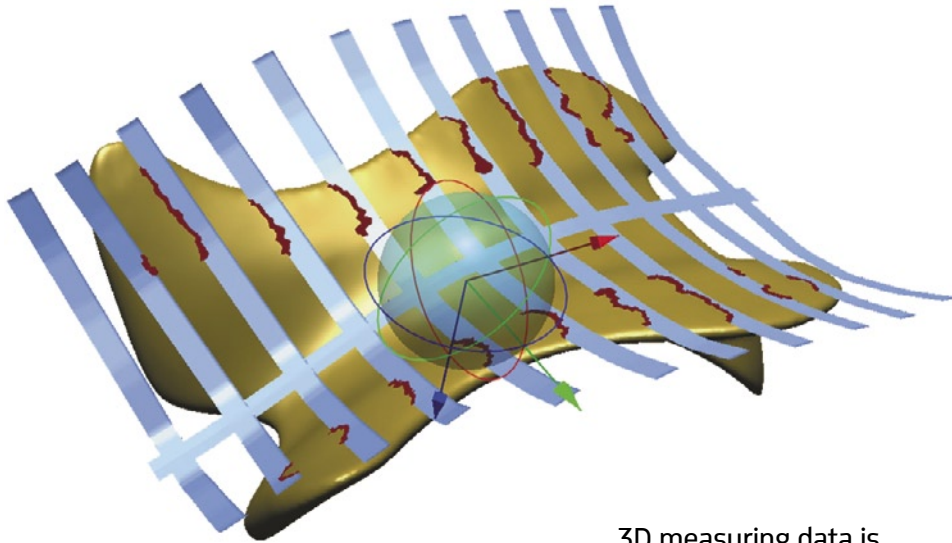
- accurate measurement of the horseback
- simple handling
- clear and unambiguous communication
- long-term archiving
- significant comparisons
- reproducibility of the shape of the horseback



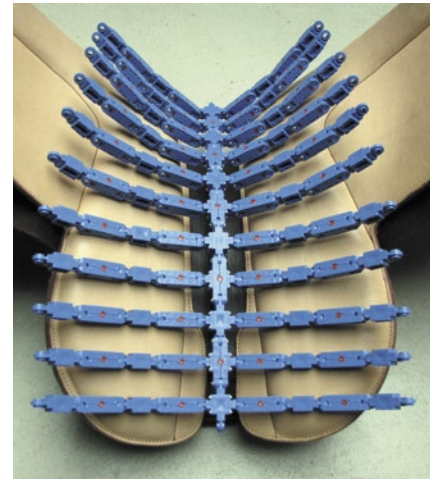
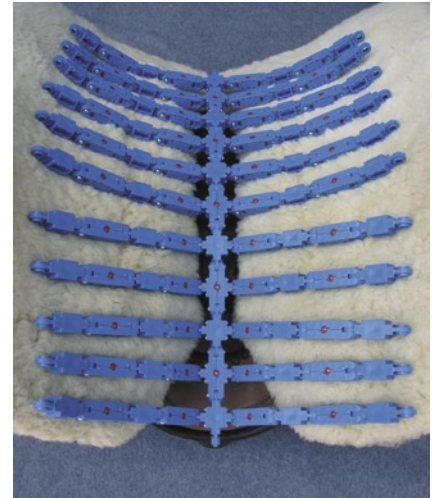
Checking the saddle fit

by inserting the locked Topographer PRO

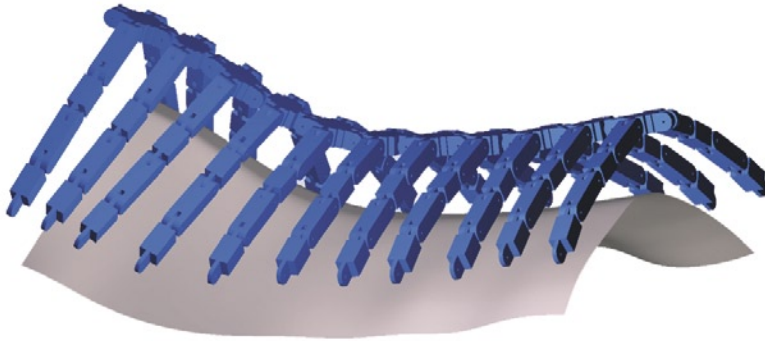
- helps with the selection of a well-fitting saddle, both used or new
- provides optimum control when making necessary changes to saddle fit
- helps with the production of a saddle
- allows the saddler to visualise changes by reproducing an archived measurement and placing the locked Topographer PRO on a horse that was previously measured



3D measuring data is available to model the fit of a prototype saddle or produce a custom made saddletree.



Visualising measurements



Virtual visualisation of the measurements:
Horseback and Topographer

Online platform

- providing a world-wide standardised measurement system for the horse back
- archiving measurements, horses, riders and saddles
- exchanging and sharing data among saddleries, dealers, manufacturers and customers
- scientific evaluation and long-term studies for veterinarians, physiotherapists and osteopaths

EQUIScan[®]

Hauptstraße 30
D-56593 Obersteinebach
Tel.: +49 26 87 - 92 89 444
Fax: +49 26 87 - 92 89 449
Germany

www.EQUIScan.eu
info@EQUIScan.eu

